



# Experiences from a drone startup

Milan Erdelj, PhD

Director of Communication Technologies @ Easy Aerial, Inc.

Introduction to Easy Aerial @ unConference #6  
Rijeka, Dec 17th 2021



**INRIA - Institut National de Recherche en  
Informatique et Automatique, France**  
**Algorithms for Autonomous Mobile Robot Deployment**



**Université de Technologie de Compiègne  
Sorbonne Universités, France**  
**Applications of Autonomous Drone Swarms**



**EasyAerial, Inc, USA**  
**DataLink development & integration**  
**Machine Learning Applications**

**Easy Aerial**  
Above & Beyond



**Easy Aerial offers the most robust and versatile autonomous airborne security, monitoring, and inspection solutions on the market today.**

**Going above and beyond the standard solutions, Easy Aerial offers options tailored to a variety of operational requirements**

Available in three configurations - tethered, free-flight (untethered) and the industry's first tethered/free-flight hybrid configuration, each of our portable drone-in-a-box solutions can be further customized to meet any security, mapping, and inspection needs.

Developed and proudly built in the U.S, Easy Aerial's durable, cost-effective solutions have proven operational experience – even in the most demanding of environments. They can be automatically deployed and commanded remotely from any location around the world and can take off and land from a moving platform, such as a ground vehicle or watercraft.

Whether conducting perimeter patrols or securing a border, monitoring a crowd or inspecting critical infrastructure, Easy Aerial provides you a reliable eye in the sky for your mission-critical operations.



**Easy Aerial is an ISO9001-certified company.**



# SECTORS

## GOVERNMENT & DEFENSE

Secure military-grade solutions for reliable service in the most austere environments



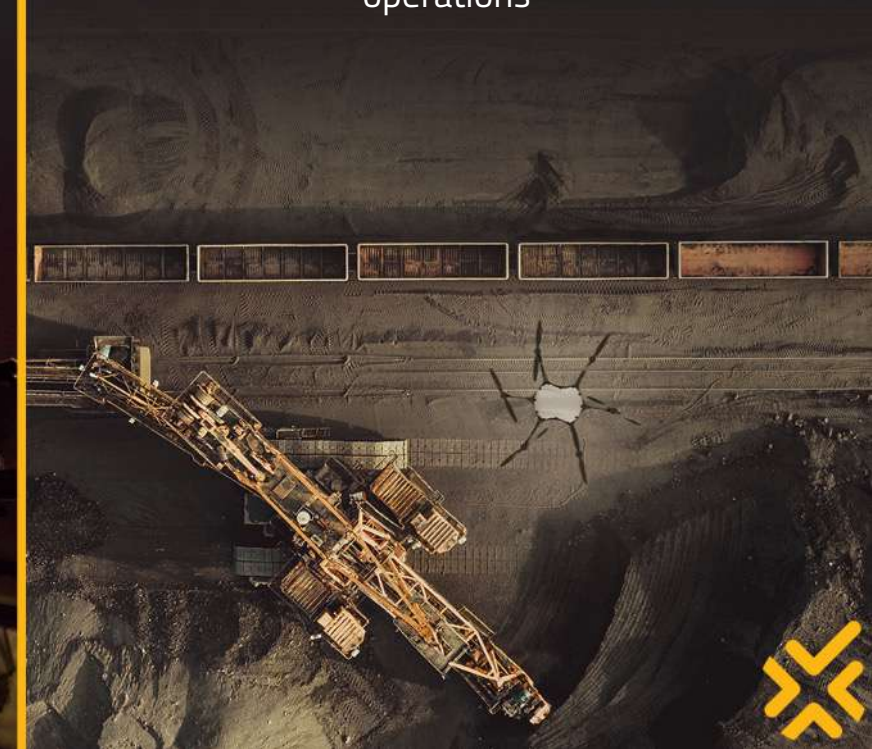
## FIRST RESPONDERS

Instant eyes in the sky day or night for Police, Fire, and Emergency Services



## COMMERCIAL

Remote data collection, monitoring and inspections for critical enterprise operations



# GOVERNMENT & DEFENSE

## APPLICATIONS



**CRITICAL SITE PERIMETER  
SECURITY**



**BORDER PROTECTION**



**DISASTER RELIEF**



# FIRST RESPONDERS

## APPLICATIONS



**POLICE**



**FIRE FIGHTING**



**DISASTER RESPONSE**



# COMMERCIAL

## APPLICATIONS



**INFRASTRUCTURE AND  
SITE SECURITY**



**RAIL AND TRANSPORTATION**



**INDUSTRIAL AND UTILITIES**



**SPORTS AND ENTERTAINMENT**



**AGRICULTURE AND  
FOOD PRODUCTION**



**AVIATION**





# PERIMETER SECURITY

## APPLICATIONS



**1.** Threat detected from CCTV, patrol, ground or fence sensors, etc.



**2.** Alarm received by SAMS which deploys drone autonomously



**3.** Operators monitor, track and react to real-time data



**4.** SAMS provides overwatch and tracking until threat is resolved



**5.** Drone returns autonomously lands, recharges and awaits next mission.



# AVIATION

## APPLICATIONS



**PERIMETER SECURITY**



**INVENTORY MANAGEMENT**



**MAINTENANCE INSPECTION**



**RUNWAY FOD INSPECTION & RUNWAY LIGHTS INSPECTION**



# RAILROAD

## APPLICATIONS



RAILROAD SECURITY



SITUATIONAL AWARENESS

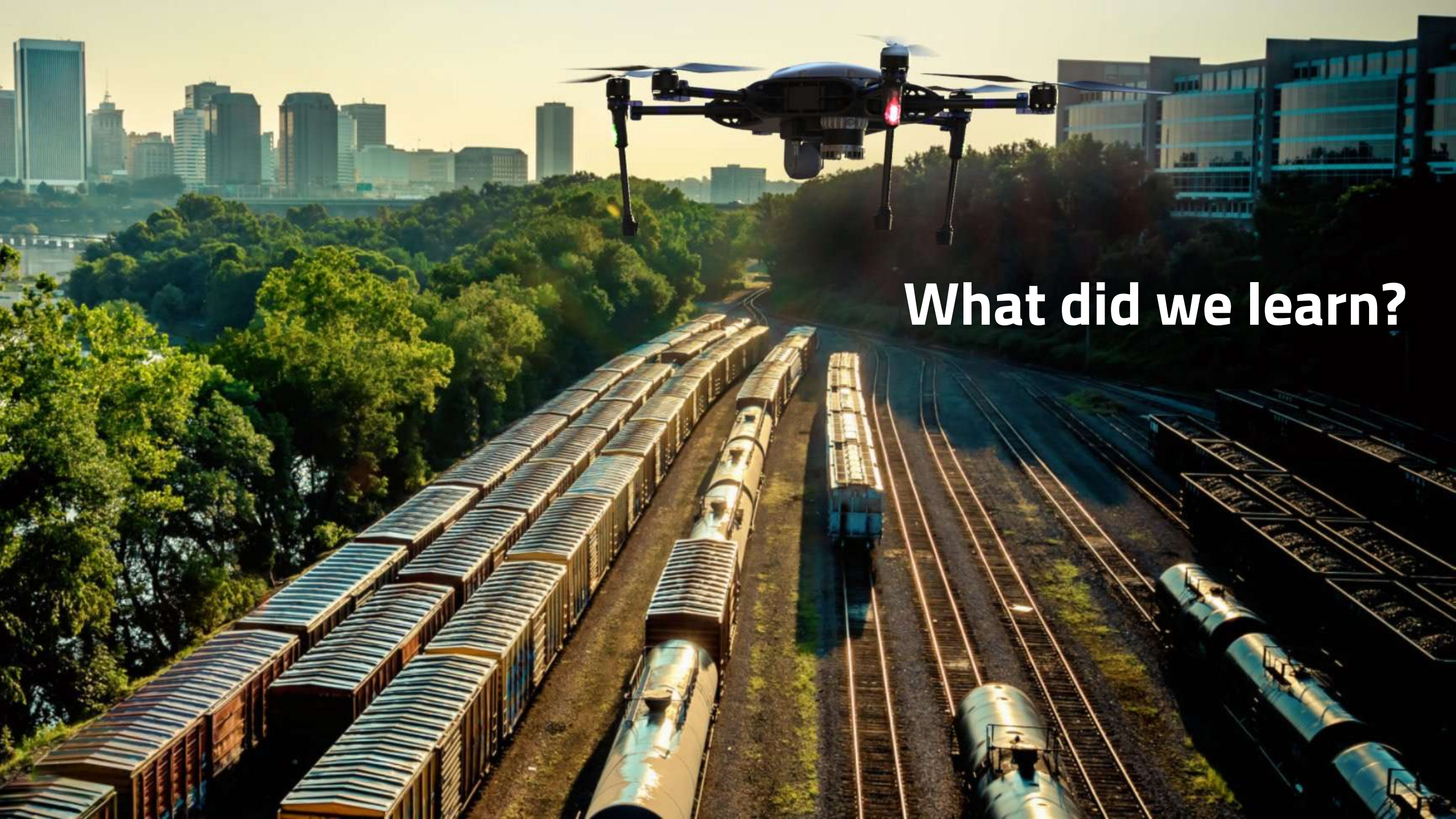


TRACK INSPECTIONS



RAILROAD SAFETY





**What did we learn?**

**Get quick and continuous  
feedback**



# Don't overcomplicate things



# Adapt – Improve - Overcome



# Going the extra mile pays off





**Better finished than perfect**





Don't forget to have fun 😊



Easy Aerial   
Above & Beyond

**Thank you for your attention!**

Milan Erdelj, PhD  
[milan@easyaerial.com](mailto:milan@easyaerial.com)